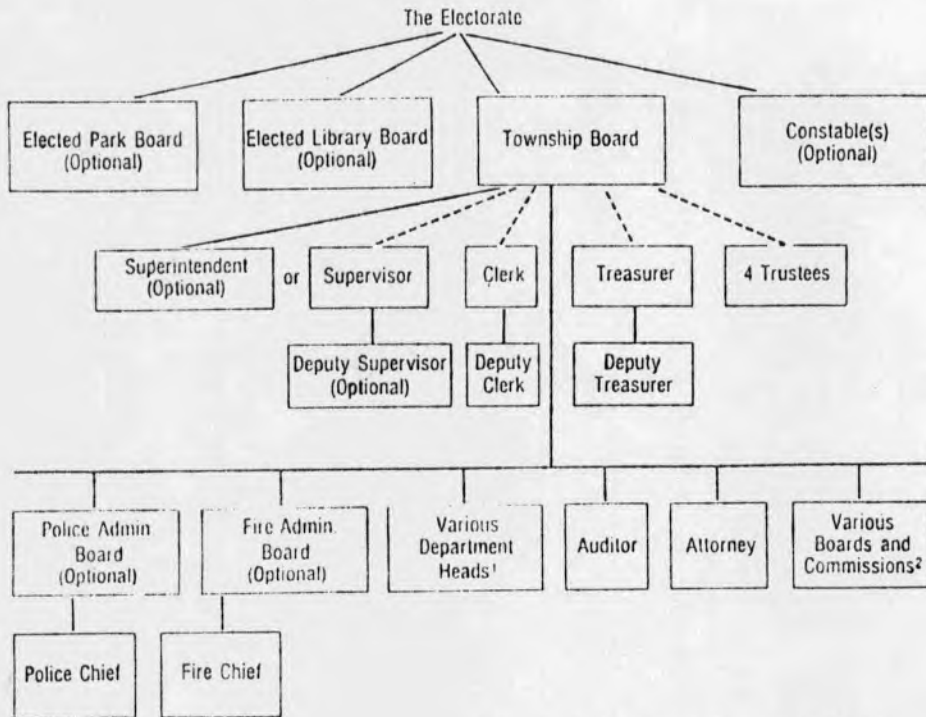


	LOCAL INPUT IN DECISIONS	CONTROL	MONEY: GETTING AND SPENDING
CURRENT SYSTEM	Non-official input by individuals & organizations	Maui County controls all decision making and administers all services	Getting & Spending: Determined by Maui County Administration and Council
NEIGHBORHOOD BOARD	All the above, PLUS Official, advisory input by locally-elected Board	Same as above, Board has advisory role only	Getting and Spending: Same as above
TOWNSHIP	All of above, PLUS 1. Locally-elected Board/Commission 2. Possibly locally-elected administrator	Same as above, EXCEPT 1. Township-controlled functions, to be determined (example: Planning, Permits and Codes, etc.) 2. Direct interaction with State 3. Direct interaction with federal government	Getting: Mostly determined by Maui County Township could get share of County, and State revenues Some direct federal funds possible Spending: Determined by Maui County, Township, State and Feds
SEMI-STATE COUNTY	All the above, PLUS Locally-elected Council and Officials	Local control of County decision making and administration of all County services More direct interaction with state agencies (e.g. representation on State Boards/Commissions) Direct interaction with federal government	Getting: Real property & gas tax, licenses, fees State grant-in-aid Federal program funds Spending: Establish budget for all County administration and services

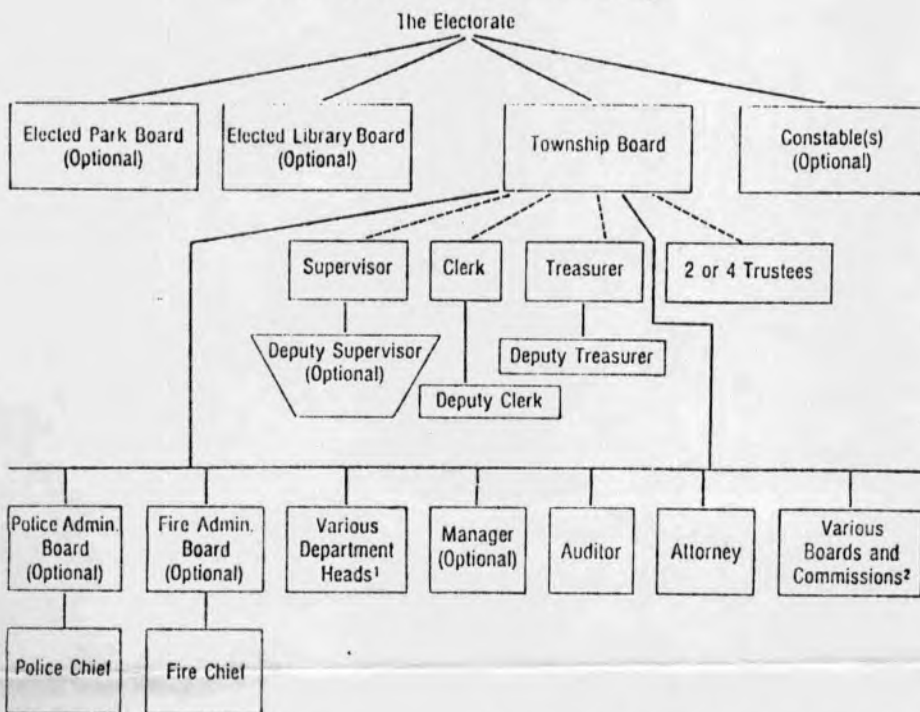
## Typical Organization Chart Charter Township



<sup>1</sup>Examples Include (all optional):  
 Assessor  
 Building Official  
 Fire Chief  
 Police Chief  
 Public Works Director  
 Zoning Administrator

<sup>2</sup>Examples Include: Board of Review (mandated)  
 (the following are optional):  
 Building Authority  
 Civil Service Commission  
 Downtown Develop. Authority  
 Planning Commission

## Typical Organization Chart General Law Township



<sup>1</sup>Examples Include (all optional):  
 Assessor  
 Building Official  
 Fire Chief  
 Police Chief  
 Public Works Director  
 Zoning Administrator

<sup>2</sup>Examples Include: Board of Review (mandated)  
 (the following are optional):  
 Building Authority  
 Civil Service Commission  
 Downtown Develop. Authority  
 Planning Commission  
 Salary Compensation Comm.

# A MODEL FOR MOLOKA'I TOWNSHIP

---

## TOWNSHIP POWERS AND RESPONSIBILITIES

- Planning - Land Use - Zoning (within limits set by state)
- Uniform Building Codes
  - Definition (set Molokai-specific codes)
  - Application/Enforcement (permits & appeals)
- Pass township ordinances (that do not conflict with those of the State or County), enforced by County Police Department
- Administer local services, as negotiated with county
  - Beginning with:
    - Building Inspector
    - Parks and Recreation
    - Office of Human Concerns (Elderly, Housing, etc.)
    - Special Projects (Ag Park, Ice House, Cooling Plant)
- Hire necessary personnel to carry out township functions
- Recommend legislative and funding priorities for Molokai to county and state, and advocate for those priorities
- Apply for federal funds, as allowed by federal law
- Levy additional real property tax, up to \_\_\_ mills for period of \_\_\_ years, to finance special township programs, subject to voter approval
- Nominations to mayor and governor for county and state appointments
- Represent interest of community in dealings with the county, state, federal governments and other outside interests

## LEADERSHIP

- Locally-elected Township Council (seven members) with 2-year terms
  - Mayor (at-large) - serve as Chair of Council and oversees administrative activities of Township
  - Treasurer (at-large) - chairs Finance Committee and oversees financial affairs of Township
  - Five Precinct Councilmembers, one elected from each of the Molokai precincts
- Planning Commission (seven-members) appointed by Township Council for staggered three-year terms
  - Council would nominate candidates for appointment by Mayor and Governor to county and state boards and commissions
- Council would appoint standing and ad hoc committees, and board or commissions as required to meet township needs

FUNDING

- Option A: Township receives set percentage of Molokai-derived real property taxes (or all taxes and fees)
- Option B: Township receives percentage of Molokai-derived taxes and fees as negotiated with County, with \_\_\_ % minimum
- Option C: Township receives percentage of county's state grant-in aid funds
- Option D: Township receives separately designated state grant-in aid funds

In addition, township could have authority to levy some additional real property tax millage (time limited, for specified use) subject to township voter approval.

REASONS FOR TOWNSHIP FOR MOLOKAI

- > Bring decisions on exclusively local issues closer to people
- > Right of people to free access to local decision makers
- > To encourage participatory democracy by giving all residents (but particularly young people) an opportunity to see and experience government in action and provide for socialization/education for future community leaders
- > Enfranchise small-island voters with locally-elected Board with real powers on major locally-based issues
- > Need for popularly-elected (accountable) and legitimized advocates/representatives to present island's concerns to county and state and serve as two-way channel of information
- > Allow community to select their own leaders, rather than have them appointed by others
- > Provide training ground for future County and State government officials from Molokai

\*\*\*\*\*

STRUCTURE OF TOWNSHIP

