

PURSUANT TO CHAPTER 92, HAWAII REVISED STATUTES AS AMENDED, NOTICE IS HEREBY GIVEN OF SITE INSPECTIONS OF THE MAUI PLANNING COMMISSION

AGENDA

DATE: DECEMBER 3, 2013 (Tuesday)
TIME: 9:30 a.m.
PLACE: Meet at the Park Plaza Parking Lot in the Maui Research and Technology Park at 1305 North Holopono Street, Kihei, Island of Maui. (see map) Park anywhere in the Park Plaza parking lot not marked reserved. Bus pick-up will be at the entrance to the Park Plaza building.

Members: Ivan Lay (Chair), Warren Shibuya (Vice-Chair), John "Keone" Ball, Sandra Duvauchelle, Jack Freitas, Wayne Hedani, Jason Medeiros, Max Tsai, Penny Wakida

Commissioners: Any Commissioner who needs a ride to Kihei from Wailuku, please meet in the County Parking Lot in front of the Kalana Pakui Building in Wailuku at 8:45 a.m. Please contact Staff Planner Kurt Wollenhaupt at 270-8205 by November 27, 2013, if you wish to carpool to the Park Plaza Parking Lot in the Maui R&T Park in Kihei. It is anticipated that most of the Commissioners will drive directly to Kihei at their convenience.

A. CALL TO ORDER

B. SITE INSPECTIONS

1. MAUI R&T PARTNERS, LLC requesting the following land use changes for Maui Research and Technology Park for properties situated mauka of the Piilani Highway at the Piilani-Lipoa Parkway intersection at TMK: 2-2-024: 002 to 008, 009 (por.), 014 to 018, 032, 034, 036 to 044, 045 (por.), 046, and 2-2-002: 084 (por.), Kihei, Island of Maui. (K. Wollenhaupt)

_____a. Community Plan Amendment (406.009 acres total) (CPA 2013/0001)

- 1) Add text to the Kihei-Makena Community Plan to describe the Maui Research and Technology Park District (verbatim text from the Maui Island Plan);
- 2) Change the community plan land use designation of approximately 359.136 acres from Kihei-Makena Project District 6 to Maui Research and Technology Park District;
- 3) Change the community plan designation of approximately 39.018 acres from Public/Quasi to Maui Research and Technology Park District; and
- 4) Change the community plan designation of approximately 7.855 acres from Agriculture District to Maui Research and Technology Park District. __

b. Changes to Title 19, Maui County Code

- 1) Add Chapter 19.33A Maui Research and Technology Park District

Kihei-Makena Project District 6 will not be deleted from the Kihei-Makena Community Plan and Chapter 19.33 of the Maui County Code will not be deleted from Title 19 as two parcels not included in the request will retain these designations.

c. Change of Zoning (406.009 acres total)

- 1) Change the zoning of approximately 260.905 acres from County Agriculture District to Maui Research and Technology Park District.
 - 2) Change the zoning of approximately 145.104 acres from Kihei Research and Technology Park District to Maui Research and Technology Park District.
2. CMBY 2011 INVESTMENT, LLC requesting a Community Plan Amendment from Agriculture to Heavy Industrial and a zoning change from Agricultural District to M-3 Heavy Industrial District for the Puunene Heavy Industrial Subdivision project on approximately 86 acres located off Mokulele Highway at TMK: 2-3-008: 018, Pulehunui, Island of Maui.(CPA 2012/0002) (CIZ 2012/0005) (K Wollenhaupt)

C. NEXT MEETING DATE: December 10, 2013 at 9:00 a.m., Planning Conference Room, Wailuku, Island of Maui.

D. ADJOURNMENT

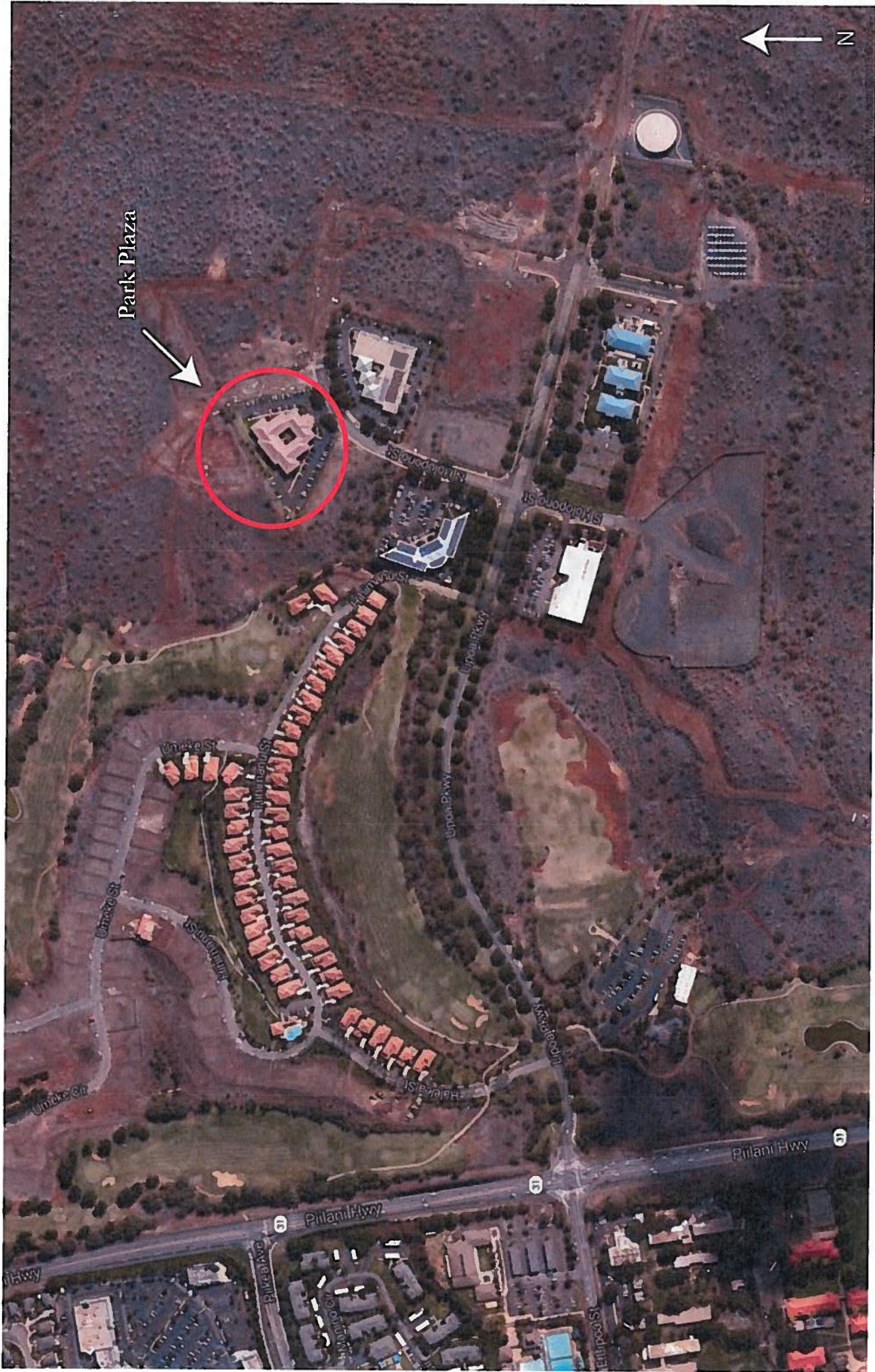
AGENDA ITEMS ARE SUBJECT TO CANCELLATION

DOCUMENTS ARE ON FILE WITH THE PLANNING DEPARTMENT. THE ADDRESS OF THE COMMISSION IS C/O THE MAUI PLANNING DEPARTMENT, ONE MAIN PLAZA, 2200 MAIN STREET, SUITE 315, WAILUKU, MAUI, HAWAII 96793.

THOSE PERSONS REQUESTING SPECIAL ACCOMMODATIONS DUE TO DISABILITIES, PLEASE CALL THE MAUI PLANNING DEPARTMENT AT 270-7735 (Maui) OR 1-800-272-0117 (Molokai) OR 1-800-272-0125 (Lanai) OR NOTIFY THE MAUI PLANNING DEPARTMENT IN WRITING AT ONE MAIN PLAZA, 2200 MAIN STREET, SUITE 315, WAILUKU, MAUI, HAWAII 96793 OR FAX NUMBER 270-7634; AT LEAST SIX (6) BUSINESS DAYS BEFORE THE SCHEDULED MEETING.

ANY FAXES SHOULD BE RECEIVED BY THE DEPARTMENT OF PLANNING BY 5:00 P.M. ON THE SECOND WORKING DAY BEFORE THE MEETING TO INSURE THAT IT IS CIRCULATED TO THE BOARD.

PLEASE NOTE: If any member of the Commission is unable to attend the scheduled meeting, please contact the Planning Department at least one day prior to the meeting date. Thank you for your cooperation. (S:\all\carolyn\120313.age_site)



Meet at Park Plaza, 1305 North Holocono Street
Park anywhere in lot not marked reserved
Bus pick-up will be at the entrance to Park Plaza building