

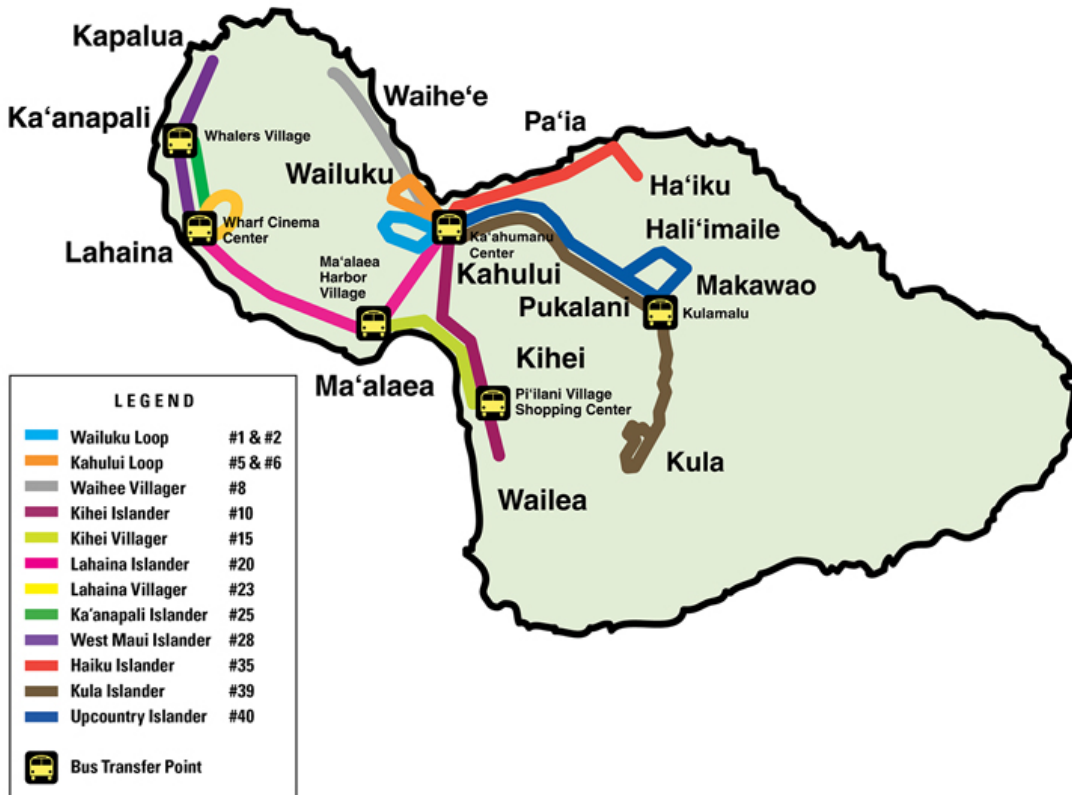
maui bus

Department of Transportation

County of Maui | August 22, 2019

Maui Bus: Fixed Routes

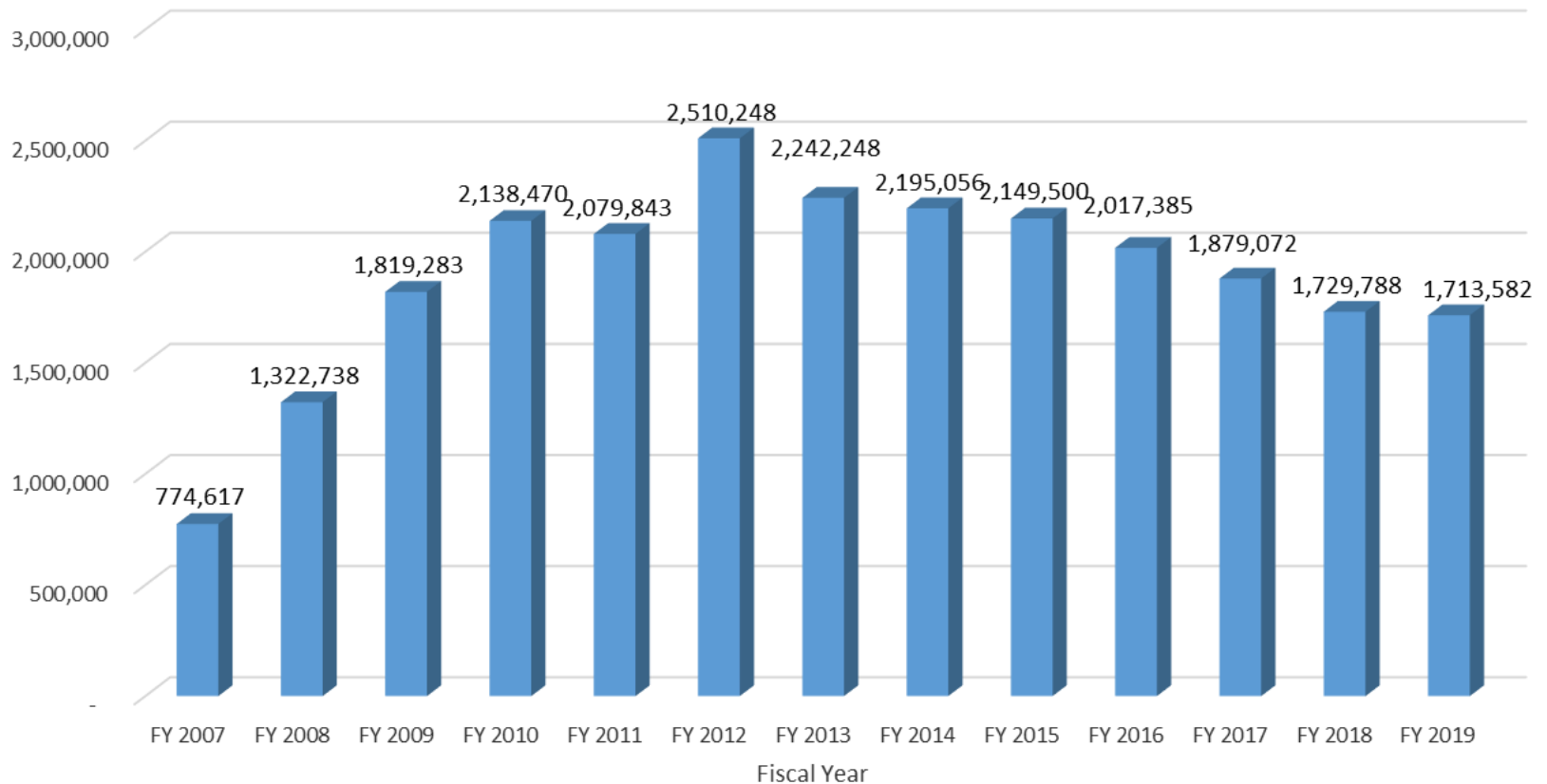
Services are contracted out to:



(808) 871-4838

Fixed Route Boardings

Maui Bus Fixed Route Service - Passenger Boardings
FY04 - FY19



Maui Bus Routes (West Maui)

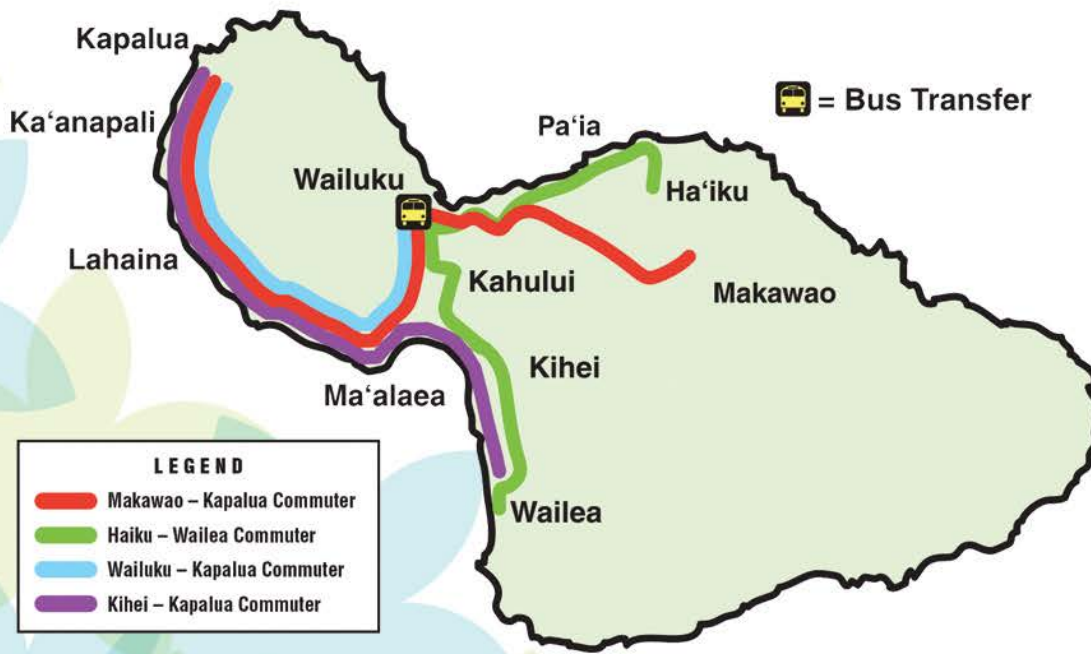
► Maui Bus Fixed Route Service

- Lahaina Islander
- Lahaina Villager
- West Maui Islander
- Ka'anapali Islander

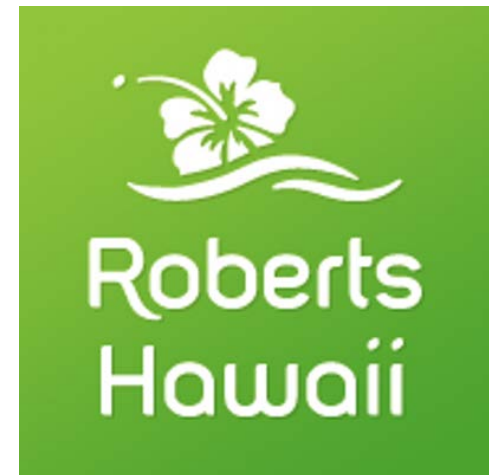
FY 2019 Maui Bus Fixed Route Passenger Counts

Month	Lahaina Islander	Lahaina Villager	West Maui Islander	Kaanapali Islander
Jul-18	22,213	7,891	32,736	1,109
Aug-18	19,635	7,183	29,297	1,012
Sep-18	20,810	7,002	27,829	978
Oct-18	21,879	7,474	31,678	1,111
Nov-18	20,382	6,718	32,108	930
Dec-18	21,807	7,000	32,472	950
Jan-19	22,579	7,684	35,507	985
Feb-19	19,500	6,875	31,399	962
Mar-19	21,080	7,279	30,832	972
Apr-19	21,251	7,533	29,464	958
May-19	20,673	7,956	30,534	1,111
Jun-19	19,809	8,582	31,356	945
Total	251,618	89,177	375,212	12,023
Monthly Average	20,968	7,431	31,268	1,002
Daily Average	689	244	1028	33

Maui Bus: Commuter Routes



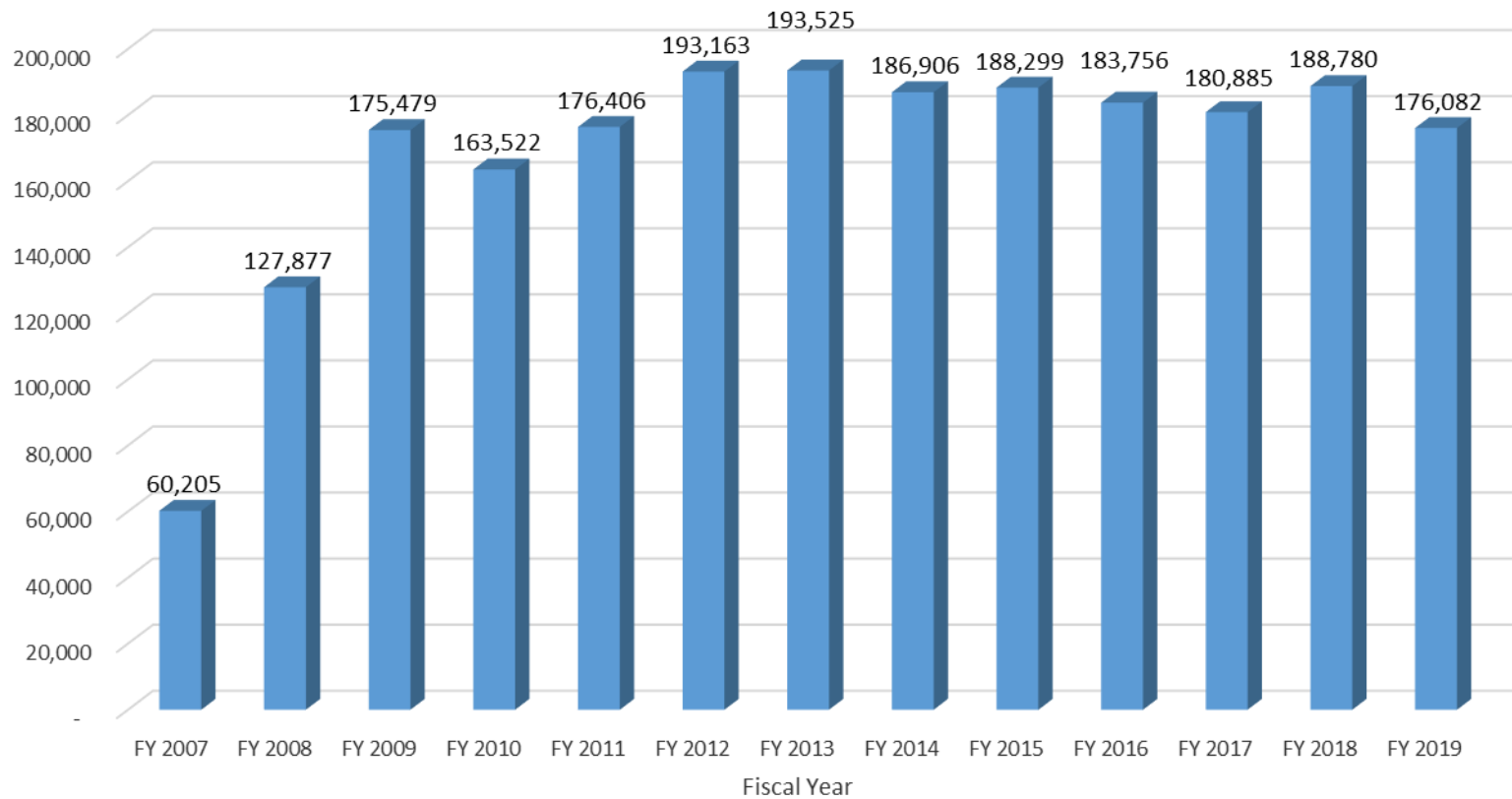
Services are contracted out to:



(808) 871-4838

Commuter Boardings

Maui Bus Commuter Service - Passenger Boardings
FY07 - FY19



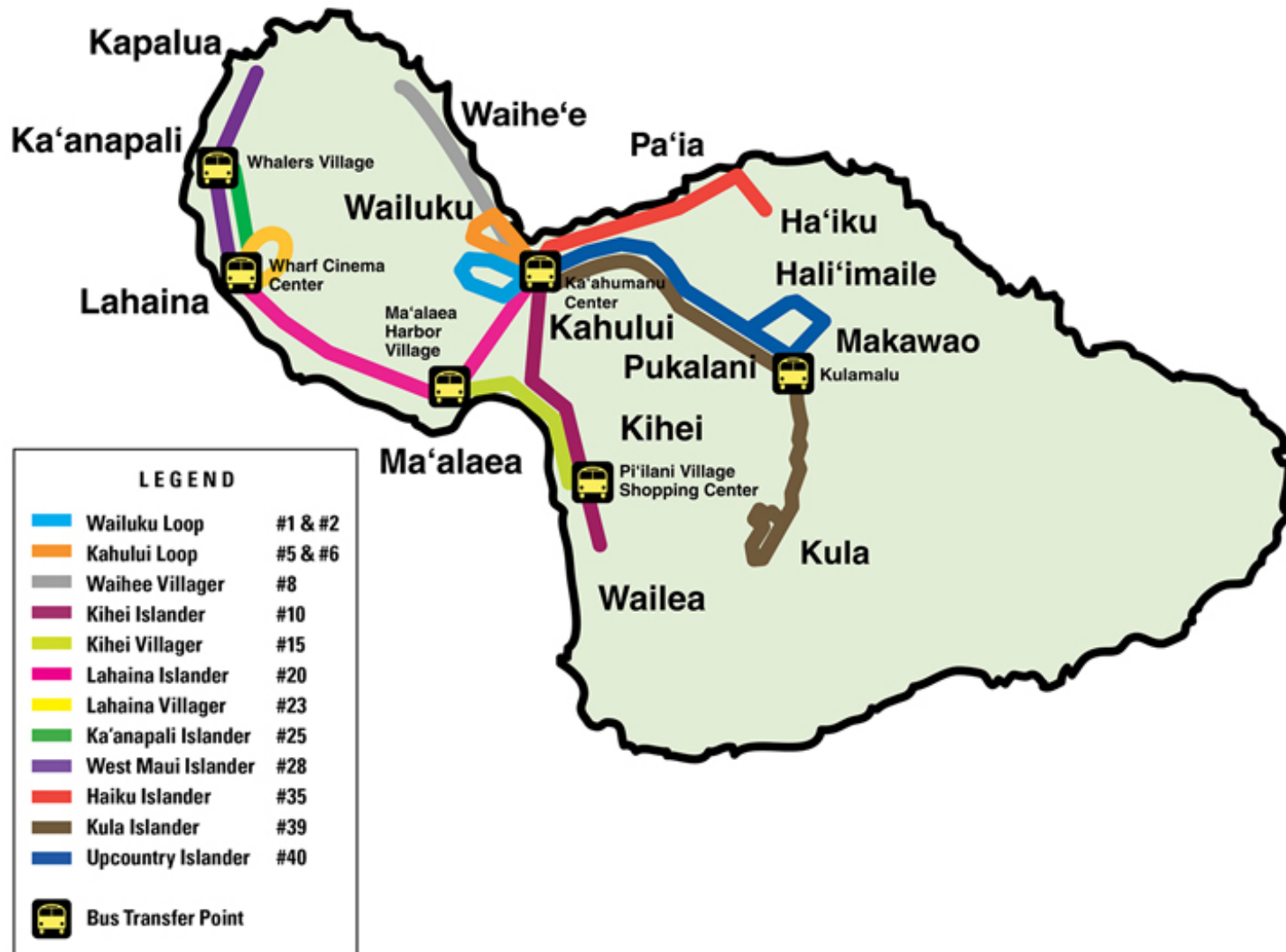
Maui Bus Routes (West Maui)

- ▶ Maui Bus Commuter Service
 - Makawao – Kapalua Commuter Route
 - Kihei – Kapalua Commuter Route
 - (4) Four Wailuku – Kapalua Commuter Routes

FY 2019 Maui Bus Commuter Passenger Counts

Month	Makawao / Kapalua Commuter	Kihei / Kapalua Commuter	Wailuku / Kapalua (Stadium) Commuter
Jul-18	2,998	693	11,575
Aug-18	2,731	725	10,541
Sep-18	2,894	600	10,768
Oct-18	2,948	676	10,244
Nov-18	2,881	609	10,147
Dec-18	3,057	588	10,322
Jan-19	3,005	750	10,290
Feb-19	2,730	698	9,425
Mar-19	2,971	656	10,346
Apr-19	2,776	655	10,058
May-19	2,964	661	10,435
Jun-19	2,663	560	9,071
Total	34,618	7,871	123,222
Monthly Average	2,885	656	10,269
Daily Average	95	22	338

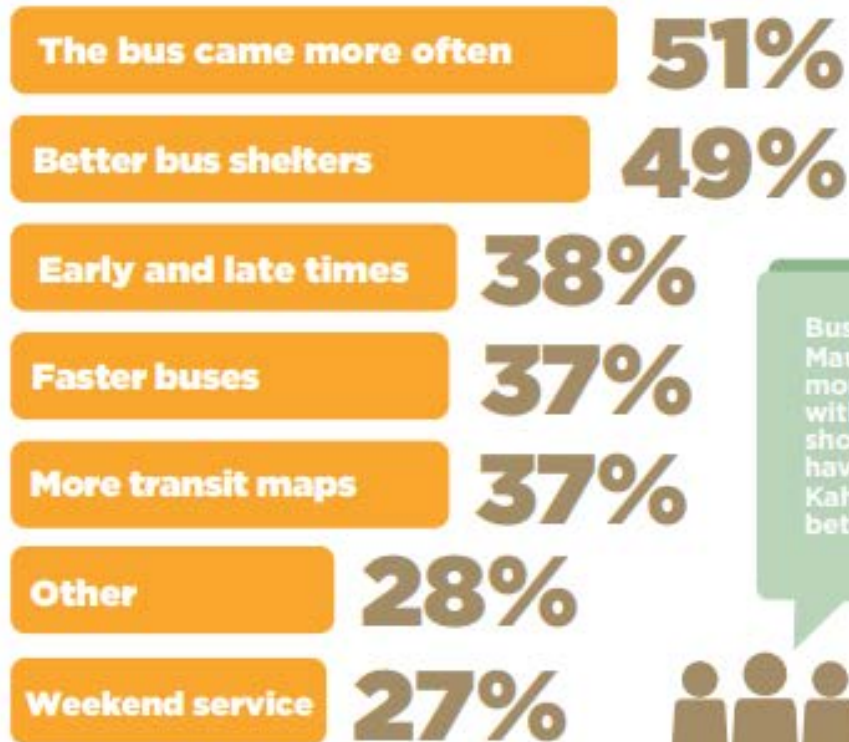
Future Transit Hubs



Survey Results

Riding the bus on Maui would be better if...

Nearly half of the survey respondents identified more frequent bus service and better shelters as improvements that would get them to ride the bus more often. Respondents also note the need for more stops and routes that allow tourists to move without a rental car.



Bus routes on Maui need to be more integrated with each other. I shouldn't always have to go to Kahului to switch between routes.



Things to Consider

- ▶ New Routes
 - Interconnected Subdivisions
 - Through Streets
 - Sidewalks, Bike Paths, Street Lightings
- ▶ Higher Frequency
- ▶ Earlier/Later Hours
- ▶ New Transit Hubs
- ▶ New Park & Rides
- ▶ New Bus Stop Shelters/Bus Stop Improvements
- ▶ Additional Funding Sources

Funding Sources

- ▶ General Fund
- ▶ Highway Fund
 - Public Transit Fares
 - Bus Advertising Revenues
 - Motor Vehicle Weight Tax
 - Fuel Tax
 - Franchise Tax
- ▶ Federal Transit Administration (FTA) Funds

Contact Info

- ▶ **Phone:** 270-7511
- ▶ **Fax:** 270-7505
- ▶ **Website:** www.mauicounty.gov/bus
- ▶ **Email:** public.transit@mauicounty.gov
- ▶ **Office Hours:** Mon.-Fri., 7:45am-4:30pm
 - Our office is closed on all County-observed holidays.
- ▶ **Acting Director:** Marc Takamori
- ▶ **Deputy Director:** Michael Du Pont
- ▶ **Address:** 2145 Kaohu St., #102
Wailuku, HI 96793