



# Department of Public Works - West Maui Infrastructure

OCTOBER 11, 2017

WEST MAUI COMMUNITY PLAN MEETING ON COUNTY INFRASTRUCTURE

# Roads, Bridges, and Drainage

- ▶ DPW areas of responsibility
  - ▶ County Roads and Bridges
    - ▶ Not State highways
    - ▶ Not private roads
  - ▶ County Drainage
    - ▶ Sediment and debris basins
    - ▶ Underground drainage piping
    - ▶ Flood Control Channels



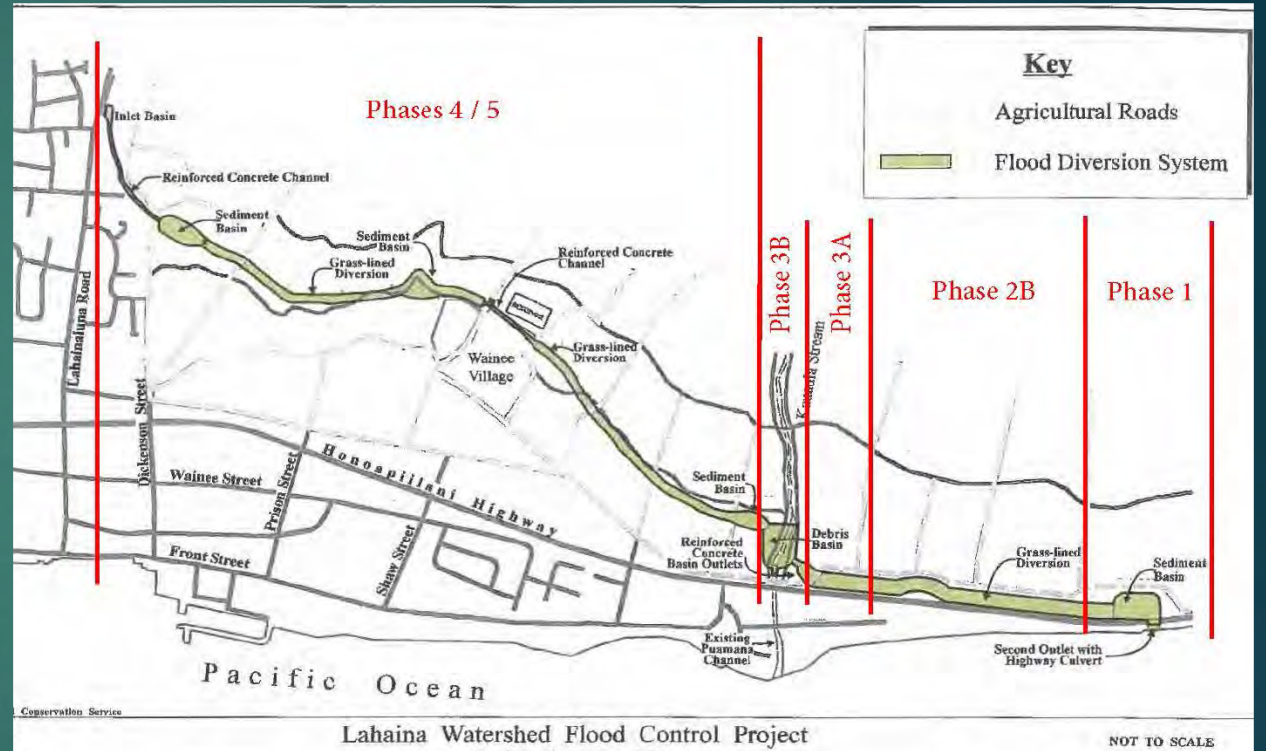
# Which Roads are County?

- ▶ Easier to say what roads are Not County
  - ▶ Honoapiilani Highway is a State highway
  - ▶ Private roads such as:
    - ▶ Office Road and gated roads in Kapalua
    - ▶ Kaanapali Parkway and most roads in Kaanapali Resort
    - ▶ All roads in Launiupoko, Ukumehame, Makila, and Puunoa
    - ▶ The “Hui Roads” (except Hui Road A and G which are County)
- ▶ Typical County Roads include
  - ▶ All roads in Lahaina Town, Lahainaluna area, Wahikuli, Honokowai, Mahinahina and Kahana.
  - ▶ County maintains DHHL roads



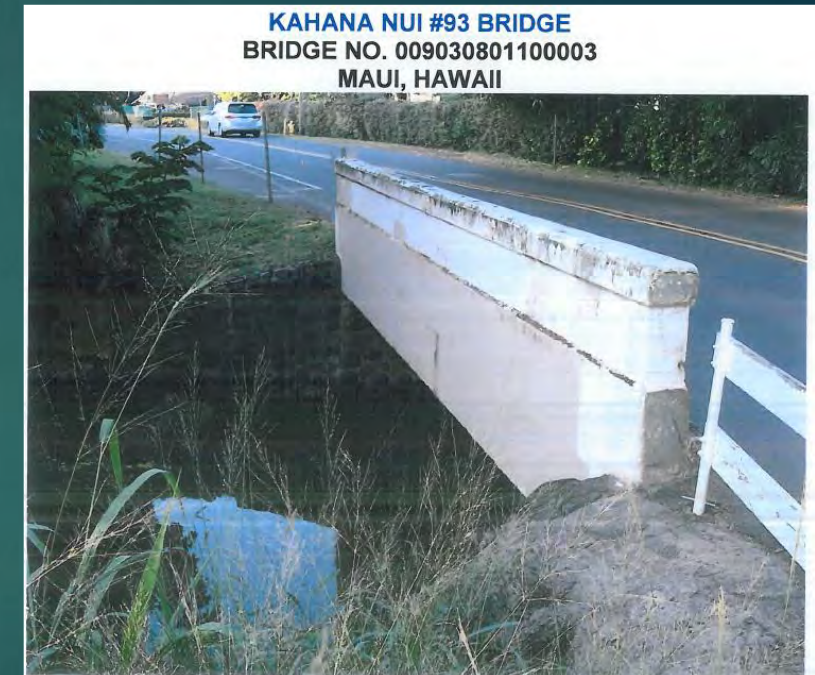
# Where are County Drainage Facilities?

- ▶ In Lahaina Town
  - ▶ Lahaina Drainage Master Plan
- ▶ Sediment Basins
  - ▶ 6 Basins from Honokowai to Napili
- ▶ Flood channels
  - ▶ Mahinahina
- ▶ Federal - Kahoma Flood Control
- ▶ Lahaina Watershed Flood Control
  - ▶ From just south of Lahainaluna to Launiupoko



# Who Pays for Roads and Drainage?

- ▶ Roads, Bridges, Bicycle Facilities, and Sidewalks
  - ▶ Highway Fund
    - ▶ Federal Highway Fund for State and County Roads
    - ▶ State Highway Fund for State Highways
    - ▶ County Highway Fund for County Roads and Bus
      - ▶ Fuel Tax
      - ▶ Vehicle Weight and Registration Fees
      - ▶ Bus Fares
      - ▶ MECO Franchise Tax
  - ▶ For Maui County Highway Fund is about \$45M in FY 18
    - ▶ \$5.8M for Construction, \$7.8M in General Bonds for roads
  - ▶ Additional \$11.2M from Federal Highways



# Who Pays for Roads and Drainage?

- ▶ Drainage Facilities
  - ▶ Highway Fund
    - ▶ For drainage work within road right of ways
  - ▶ General Fund
    - ▶ For other projects such as basins, etc
    - ▶ For FY18, \$3.4M in General Bonds
  - ▶ Federal Funds
    - ▶ In the past, Federal Funds have paid for construction of the drainage basins and Kahoma Flood Control



# Roads and Drainage Recent Past Projects

- ▶ Every Year Countywide Resurfacing in each district
  - ▶ FY15 – Puukoli'i Road
  - ▶ FY16 – Lower Honoapiilani Road Hoohui to Napilihau (Nov 2017)
  - ▶ FY17 – Ainakea, Wahikuli Roads (possibly Nov/Dec 2017)
- ▶ Culvert repair and guardrails on Lower Honoapiilani near Kahana Sunset
- ▶ County Pavement Preservation
  - ▶ Seal Coat in Kaanapali Hillside, Wahikuli, DHHL Leali'i
- ▶ Drainage Projects
  - ▶ Phase 3A Lahaina Watershed

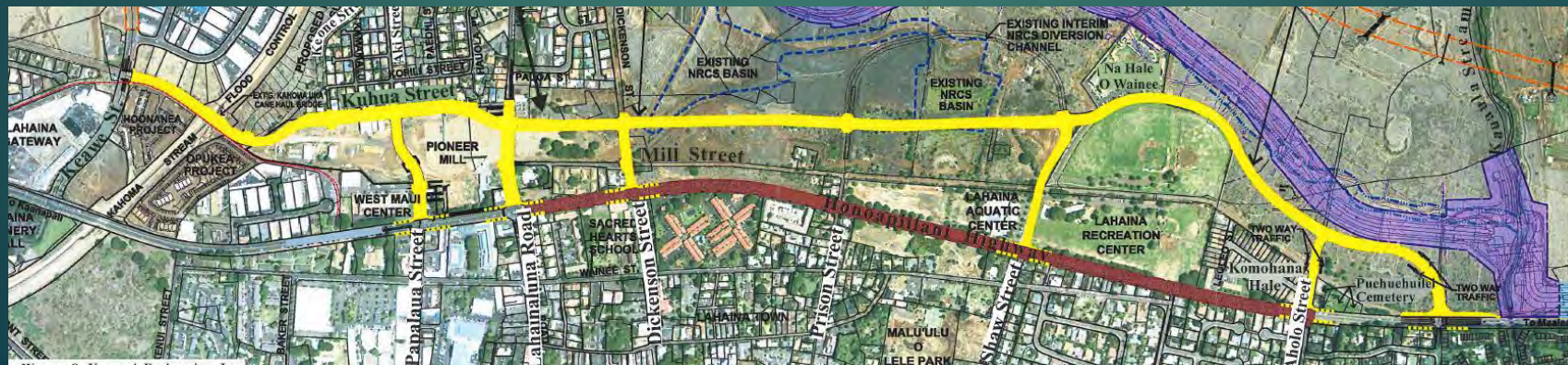
# Upcoming Roads, Bridges, and Drainage Funded Projects

- ▶ FY18 West Maui District Resurfacing – Puu Anoano, Kahana Place, and Napili Place
- ▶ FY19 Napili 4/5 Culvert Replacement on Lower Honoapiilani Road
- ▶ FY19 or 20 – Napili 2/3 Basin Sediment Removal
- ▶ FY19 – Kahananui Bridge Replacement (Fed Aid project)
- ▶ West Maui Greenway – in design in FY18 for use of old railroad right of way from Keawe to Kapunakea (and farther north)



# Roads, Bridges, and Drainage Projects in the Future

- ▶ Complete Lahaina Watershed Phases 3B, 4 and 5
- ▶ Plan, design, and construct West Maui Greenway
- ▶ Design and construct Kuhua Street Extension from Keawe St. south past Aholo Road
- ▶ Redesign and construction of Lower Honoapiilani Phase IV from Hoohei to Napilihau Road – sidewalks, drainage, etc
- ▶ Various other maintenance projects



# Community Plan Language Suggestions

- ▶ Title 18, Subdivisions, has language in the design section that standard right of ways can be adjusted as recommended in the Community Plan
  - ▶ Consider wider or narrower streets for particular areas, or wider sidewalks for areas of intended high pedestrian use
- ▶ Kuhua Street Extension should be discussed as to when to proceed with design and construction, and by whom (public, private, or both)
- ▶ West Maui Greenway should be discussed as to where north and south terminus points should be, and what areas should proceed before other areas

# MAHALO!

David Goode, Director  
Department of Public Works

