

we are WEST MAUI

WEST MAUI COMMUNITY PLAN

Coastal Resilience

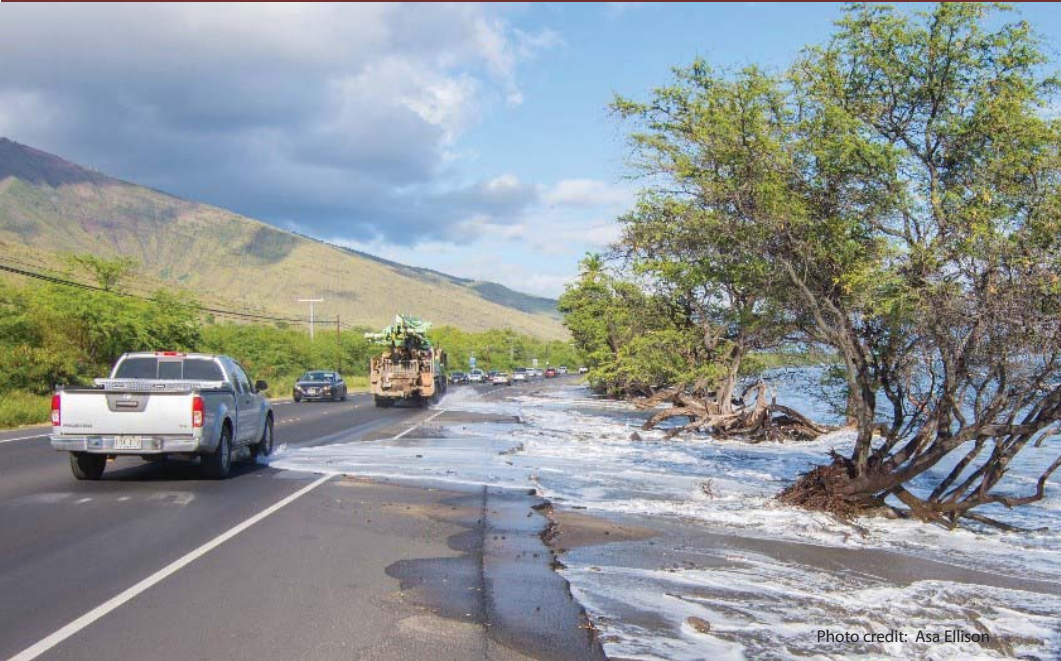


Photo credit: Asa Ellison

Event

The Planning Department partnered with the University of Hawaii (UH) Sea Grant on an event focused on coastal resilience. The event provided an opportunity to share the latest information on coastal resilience, sea level rise, and climate adaptation.

Members of the community had the opportunity to view draft coastal erosion and sea level rise potential exposure area maps from the draft statewide Sea Level Rise Vulnerability and Adaptation Report.

Presentations

Tara Owens, UH Sea Grant, provided an overview of coastal hazards with a focus on shoreline issues for West Maui.

Brad Romine, UH Sea Grant, presented on the results of the draft Sea Level Rise Vulnerability and Adaptation Report for West Maui including potential exposure areas.

James Buika, Maui County Planning Department, spoke on ways the County is bringing smarter planning and efficiency into the post planning process for disaster reconstruction.



Q&A Session

Community awareness of sea level rise due to the changing climate is increasing. With this awareness comes a growing concern of future impacts to our natural and built environment. Many in the community are asking:

- What now?
- What do we do about existing and future development?
- What about impacts to the environment and natural resources? Limu? Coral reefs?
- Are the existing permitting requirements and process working?
- What type of land uses are appropriate?

These are important questions that reflect a general concern and desire for a resilient community. The release of the Hawaii Sea Level Rise Vulnerability and Adaptation Report lends us an opportunity to use the findings to plan for a more resilient West Maui. Learning from our kupunas and native Hawaiian culture and practices will also strengthen us.

