

The Basics:



How to Recognize Drugs, Paraphernalia, Dangers, and Who Can Help



Chief's Message



JAMES "KIMO" APANA
MAYOR

OUR REFERENCE
YOUR REFERENCE

POLICE DEPARTMENT COUNTY OF MAUI

55 MAHALANI STREET
WAILUKU, HAWAII 96793
(808) 244-6400
FAX (808) 244-6411

October 3, 2001



THOMAS M. PHILLIPS
CHIEF OF POLICE

KEKUHAUPIO R. AKANA
DEPUTY CHIEF OF POLICE

As the primary law enforcement agency in Maui County, the Maui Police Department is deeply concerned about the effects of drug abuse in our community. Drug abuse and addiction comprise a public health problem that affects many people and has a wide range of social consequences.


The latest National Household Survey on Drug Abuse, an annual nationwide survey among Americans age 12 and older revealed that about 14.8 million Americans were current users of illicit drugs, meaning they used an illicit drug at least once during the month prior to being interviewed. About 3.5 million were dependent on illicit drugs and an additional 8.2 million were dependent on alcohol.

Unfortunately, Maui County has not been spared from the problems of these national trends. Cocaine, methamphetamine (ice), heroin, marijuana and the latest craze "Rave Drugs" such as Ecstasy (MDMA), GHB, LSD and Rohypnol continue to grow in popularity here.

The cost of drug abuse in our community in terms of treatment, prevention, healthcare, reduced job productivity and lost earnings are enormous not to mention other costs to society, such as crime, correctional services, and social welfare. More than half of the estimated cost of drug abuse is associated with drug-related crime.

This booklet has been produced in an effort to arm our citizens with information about the illicit drugs being abused in our community, and to provide those who need help a resource of available programs.

Sincerely,


THOMAS M. PHILLIPS
Chief of Police

What's Inside

1. Marijuana	3
2. Crystal Methamphetamine	5
3. Cocaine	7
4. Heroin	9
5. GHB	11
6. Mushrooms	11
7. LSD	13
8. Ecstasy	13
9. Clandestine Laboratories	15
10. Rave Parties	15
11. Agencies That Can Help	16



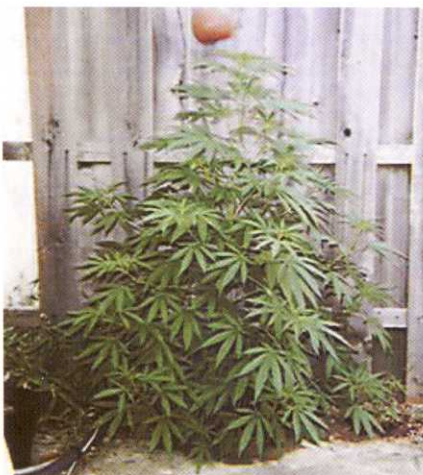
Trimmed "Buds"



"Bong"



"Joints"



Marijuana Plants



NAME OF DRUG: MARIJUANA (Cannabis Sativa)

STREET NAMES: POT, WEED, GRASS, GANJA, HERB, PAKALOLO, MAUI WOWIE, MAUI MAGIC, KONA GOLD, MANGO WEED, ACA-PULCO GOLD, CANNABIS, HEMP, SHAKE, BUDS, HASH, HASH OIL, COLAS, SINSEMILLA, AND DOPE.

HOW USED: Marijuana is ingested orally in food and drinks, but most prevalently by smoking. Marijuana and Hashish are sometimes baked into and eaten in brownies and cookies. Marijuana is brewed into a tea and consumed in a beverage. The most common usage is by smoking the marijuana in hand rolled cigarettes called a "joints." Marijuana pipes come in all shapes and sizes. Water pipes called bongs are also used to smoke Marijuana and Hashish.

WHAT IS MARIJUANA: Marijuana is a variety of a Hemp Plant (Cannabis Sativa) which contains THC (delta-9-tetrahydrocannabinol), the active ingredient that makes Marijuana a mind altering drug. The dried leaves (shakes) and flowers (buds) are used, however the flowers have the highest THC potency in the plant. Marijuana comes in several forms; dried leaves and flowers, Hashish (compressed marijuana resin), and hash oil (distilled tar-like liquid distilled form Hashish. Marijuana is grown indoors and outdoors. The use of hydroponics is the now being employed for the illegal indoor growing of Marijuana.

DANGERS: Marijuana, when smoked, produces 50% more tar then cigarettes. Smoking marijuana causes short-term memory loss and has been linked to serious respiratory ailments. Many researches believe that Marijuana is a "gateway" drug. That young people who smoke Marijuana have a much greater risk of using other drugs. Marijuana can be addictive.

EFFECTS: The effects of Marijuana are determined on the potency of the drug and the individual using the drug.

Physical effects are; dry mouth, red eyes, accelerated heart rate, and a poor sense of coordination and balance. The drug also intensifies visual and audio perception and there is also a slower reaction time.

Craving for food intensifies. Users call these cravings, "Munchies". Psychological effects are forgetfulness and apathy. Marijuana is not physically addictive, but could lead to psychological dependence.

PARAPHERNALIA: Cigarette rolling papers, heating source, roach clips, rolled up match covers, marijuana pipes, water pipes (bongs).



1/8 Ounce Crystal Methamphetamine



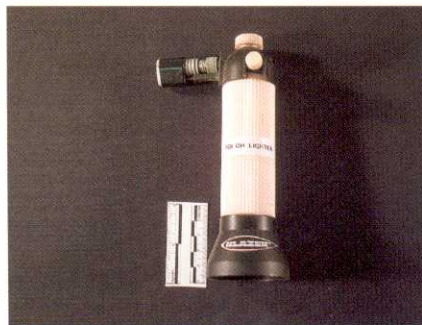
One Ounce Crystal Methamphetamine



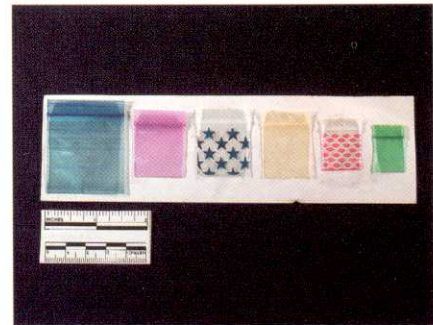
Glass Pipe for Crystal Methamphetamine



Torch Lighter for smoking Crystal Meth

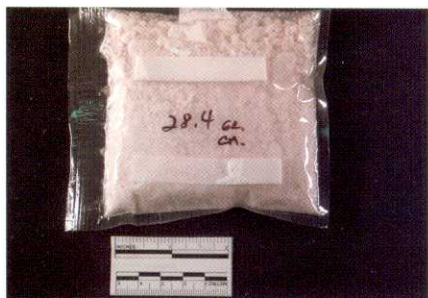


Large Torch Lighter



Packets used for Crystal Meth

NAME OF DRUG:	CRYSTAL METHAMPHETAMINE (d-methamphetamine hydrochloride)
STREET NAMES:	ICE, BATU, CLEAR, TU-TU, CRYSTAL METH, HAWAIIAN SALT, GLASS, SHABU-SHABU, METH, YELO.
WHAT IS CRYSTAL METH:	Crystal Methamphetamine is a very powerful stimulant and is the purest form of Methamphetamine. Tests made on Crystal Methamphetamine seized in Hawaii have produced purity levels of 90 to 100%. This drug, which is manufactured in illegal Clandestine Drug Laboratories, is being smuggled into Hawaii from Asia, Mexico, and the Mainland United States. Crystal Methamphetamine is also being made in these Clandestine drug labs in Hawaii. Crystal Methamphetamine resembles rock salt and may come in shades of brown, a milky white, or clear.
HOW USED:	The most common way Crystal Methamphetamine is ingested is by smoking. However, the drug is also being ingested by injection. The Crystal Meth. is smoked by the crystals being placed within the bowl portion of a glass pipe, a heating source is applied to the bowl, and the vapor produced is inhaled.
DANGERS:	Crystal Methamphetamine is a powerful and highly addictive stimulant which, when smoked, causes a powerful "rush" to the brain. This drug may cause an instant addiction and has an enormous effect on the mind and body, including death. Use of this drug also causes damage to the brain. Chronic abuse produces a psychosis, paranoia, visual hallucinations, erratic and/or violent behavior.
EFFECTS:	This synthetically produced drug is a potent central nervous system stimulant that increases the heart rate, blood pressure, body temperature, and rate of breathing. Heavy usage will cause extensive weight loss, hallucinations, anxiety, extreme paranoia, and destructive and violent behavior.
PARAPHERNALIA:	Glass pipe, scraper, loading devices, plastic packets, scale, and heating source.



One Ounce Cocaine



Crack (Freebase) Cocaine



Glass Straw for snorting Cocaine



Glass Pipe for smoking Crack Cocaine



Brass Straw for snorting Cocaine

NAME OF DRUG:	COCAINE/CRACK COCAINE
STREET NAME:	COKE, BLOW, WHITE, NOSE CANDY, TOOT, AND SNOW. CRACK IS KNOWN AS; CRACK, ROCK, ROX-ANNE, AND BASE.
WHAT IS COCAINE/CRACK:	Cocaine is a powerful central nervous system stimulant made from the Coca plant of South America. Cocaine is a white to off-white powder. Crack Cocaine is a form of free-base cocaine where the main difference involves the way it's ingested. It is described as a hard off white colored solid piece of rock cocaine.
HOW USED:	Cocaine is usually ingested by snorted the drug into the nose and rubbed on the gums. The cocaine is chopped with a razor and formed into lines and then snorted through a straw or rolled up dollar bill. Cocaine is also ingested by injection. Crack cocaine is placed into a crack pipe, heated, and the vapors are smoked.
DANGERS:	Weight loss, insomnia, paranoia, nasal infection, sexual dysfunction, and overdose are dangers associated with the use of cocaine. Crack cocaine is smoked and enters the body as a vapor, which causes a "rush." This method speeds up the body system, however the intense high is soon replaced with an intense low. Since the fastest way to overcome this low, is smoking more crack cocaine, addiction to the drug soon follows. "Speedballing" or the injection of a both Heroin and Cocaine at the same time is an extremely dangerous and often lethal way cocaine is used.
EFFECTS:	Cocaine is a strong stimulant that affects the nervous system. At first, the user may experience euphoria, overall feeling of power and confidence. However, after the drug wears off, the user may suffer from anxiety, insomnia, apathy, and a psychological addiction may soon set in. Crack cocaine, since smoked, causes a greater chance of addiction. Physical effects are dilated pupils, increased blood pressure, nasal redness and soreness, running nose, increased pulse rate and body temperature.
PARAPHERNALIA:	Mirror, razor blade, rolled up dollar bill, cut straw, paper bindle, cocaine bottle, cocaine spoon, syringe and scale. Crack pipe, metal scraper, plastic packets, heat source, and steel wool (used as filter).



Black Tar Heroin



Rock of Black Tar Heroin



Syringes and other Paraphernalia for Heroin

NAME OF DRUG:	HEROIN
STREET NAMES:	SMACK, BLACK TAR, CHIVA, SCAG, BIG H, HORSE, JUNK, TAR, BALL, AND BROWN HEROIN.
WHAT IS HEROIN:	Heroin is a powerful narcotic, which induces a strong physical dependency on the drug. The user develops a quick tolerance to the drug and will need a larger dosage, which in turn wears off more quickly. Black Tar Heroin is most prevalent in Hawaii.
HOW USED:	Black Tar Heroin is heated and its fumes inhaled. The most common method of ingesting the drug is by injection. The use of heroin mixed with cocaine or another stimulant is known as "speedballing."
DANGERS:	Heroin is an extremely strong narcotic that causes a strong dependency to the drug. If a sufficient dose is taken, respiratory depression, coma, and death may occur.
EFFECTS:	Physical dependency with a quick tolerance to the drug will occur. Users describe a euphoric high and sense of well-being. Physical symptoms are; an itchy nose and skin, lowered blood pressure, pinpoint pupils, slow and slurred speech, sweating, and disorientation. Drooping eyelids and the head nodding forward is also a strong physical indication. Withdrawal from the drug will usually appear within six to twelve hours after last dose (fix). Withdrawal symptoms are: agitation, restlessness, stomach cramps, runny nose, watery eyes, constricted pupils, yawning, muscle pain, spasms, diarrhea, alternating chills and sweating.
PARAPHERNALIA:	Spoon, cotton ball, syringe, matches or lighter, tin foil, rubber tubing, balloons, and scale.

