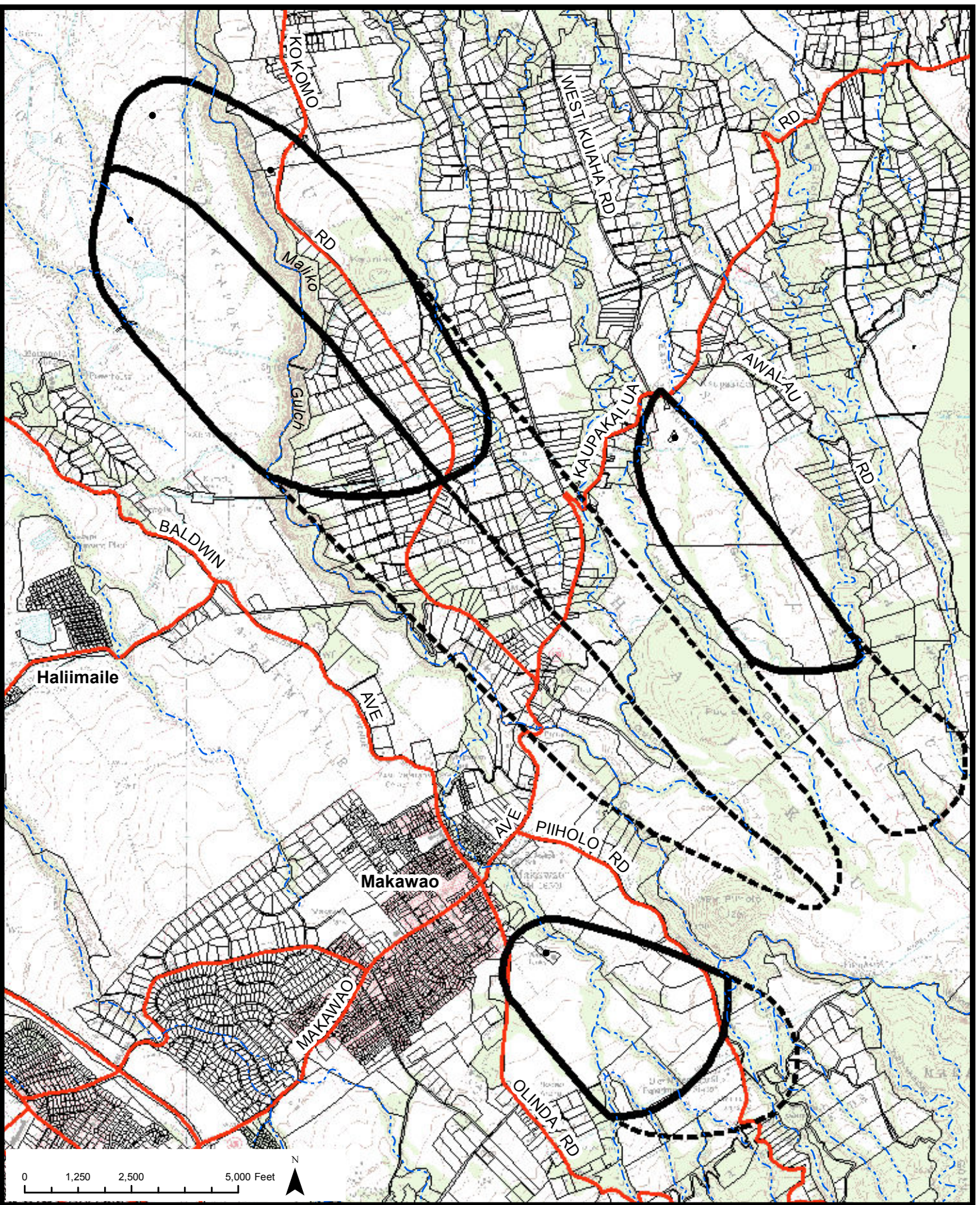
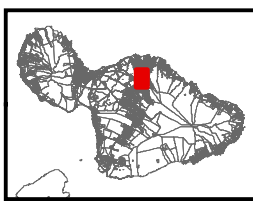


Wellhead Ord 06222013\_Eva\_Map6\_P.mxd 1:36000 for Dept. of Water waila.landenberge@co.mauhi.us Dept. of Management GIS



**LEGEND**

- WPOD ZONE A
- WPOD ZONE B - 2 year
- ⊖ WPOD ZONE C - 10 year
- 2013 PARCEL



**NOTE:**

WPOD zones were delineated by the University of Hawaii Department of Geology & Geophysics utilizing fixed distance for the ZONE A nearest the well and Time of Travel (TOT) criteria for Zones B and C using the USGS 3-dimensional numerical groundwater model, MODFLOW, followed by the particle tracking program, MODPATH.

ZONE B is intended to designate a conservative estimate of the area that may contribute bacteria and viruses to the wellhead.  
A 2-year TOT criterion is based on survival times for bacteria and viruses in soil and groundwater.

ZONE C is based on a 10-year TOT to allow sufficient time to implement management and remedial measures to mitigate contamination from accidental contaminant spills and other causes.

<p><b>OFFICE OF THE COUNTY CLERK</b> 200 SO. HIGH ST., WAILUKU, MAUI, HAWAII 96793</p>	
<p><b>WELLHEAD PROTECTION OVERLAY DISTRICT</b> <b>MAP No. 6</b> <b>KOKOMO - PIIHOLO - AWALAU, MAUI</b></p>	
<p><b>APPROVED:</b> _____ COUNTY CLERK                      DATE</p>	<p>PUBLIC HEARING: _____ ADOPTED BY COUNCIL: _____</p>
<p><b>APPROVED:</b> _____ PLANNING DIRECTOR                      DATE</p>	<p>ADOPTED BY MAYOR: _____ BILL No./YEAR _____ ORDINANCE No. _____</p>
<p><b>DRAFT 03</b>      <b>WPOD Map 6</b></p>	