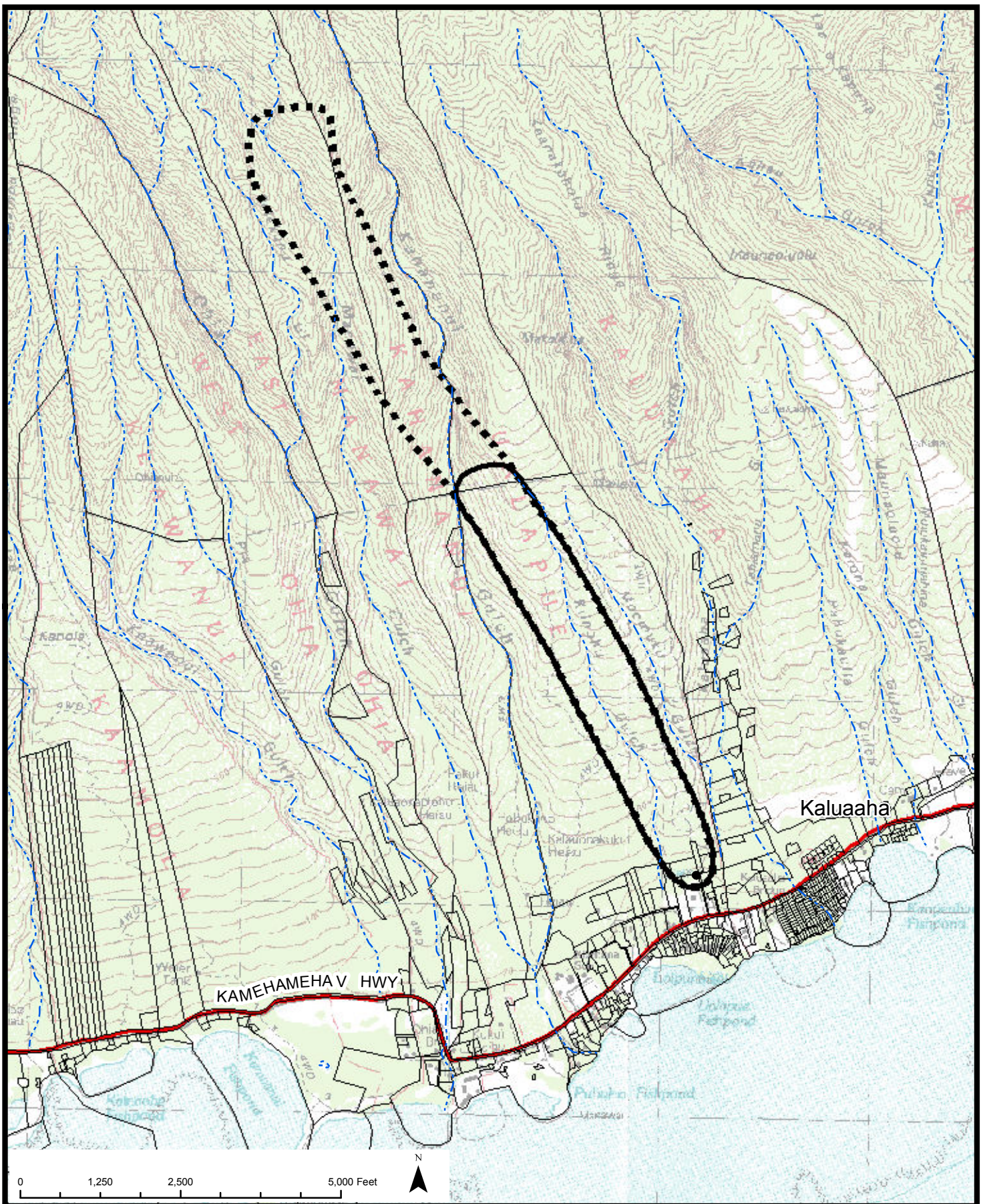


Wellhead Ord 05222013_Eva_MAP 11_P.mxd 1:24000 Water Dept wale.landenberg@co.mauhi.us



LEGEND

- WPOD ZONE A
- WPOD ZONE B - 2 year
- ⋯ WPOD ZONE C - 10 year
- 2013 PARCEL



NOTE:

WPOD zones were delineated by the University of Hawaii Department of Geology & Geophysics utilizing fixed distance for the ZONE A nearest the well and Time of Travel (TOT) criteria for Zones B and C using the USGS 3-dimensional numerical groundwater model, MODFLOW, followed by the particle tracking program, MODPATH.

ZONE B is intended to designate a conservative estimate of the area that may contribute bacteria and viruses to the wellhead.

A 2-year TOT criterion is based on survival times for bacteria and viruses in soil and groundwater.

ZONE C is based on a 10-year TOT to allow sufficient time to implement management and remedial measures to mitigate contamination from accidental contaminant spills and other causes.

OFFICE OF THE COUNTY CLERK
200 SO. HIGH ST., WAILUKU, MAUI, HAWAII 96793

**WELLHEAD PROTECTION
OVERLAY DISTRICT
MAP No. 11
UALAPUE, MOLOKAI**

APPROVED:

COUNTY CLERK

APPROVED:

PLANNING DIRECTOR

DATE

DATE

PUBLIC HEARING: _____

ADOPTED BY COUNCIL: _____

ADOPTED BY MAYOR: _____

BILL No./YEAR _____

ORDINANCE No. _____

DRAFT 03

WPOD Map 11